

Parish Profile

St Alban the Martyr Northampton



We are a vibrant and welcoming Christian community committed to growth through worship, prayer and fellowship whilst responding to the needs of the parish and the wider world.

2024

Welcome



THE PARISH OF
SAINT ALBAN
THE MARTYR
THE CHURCH OF ENGLAND
www.stalbanthemartyr.co.uk
Charity Registration Number 1131429

Welcome to our Parish Profile. Thank you for taking the time to read it. Our aim is to give you an understanding of our congregation and parish, a taste of what it might be like to be a part of the St Alban's family.

We hope this enables you to consider prayerfully our vacancy for a new vicar and we look forward to meeting you should you decide to apply.

Rosemary Searle

Jill Kearns

Churchwardens



Contents

St Alban the Martyr Northampton.....	1
Welcome	2
Contents.....	3
Parish of St Alban the Martyr, Northampton.....	4
The Diocese and Deanery	7
Vision, Mission and Future Direction.....	8
Church Buildings	9
Sunday and Weekday Services	12
Support Available.....	14
Youth and Children’s Work.....	15
Work with the Community	16
Church Groups and Activities.....	17
Finance	18
Organisation.....	19
Person Specification for St Alban the Martyr.....	20
A position for you?	21

Parish of St Alban the Martyr, Northampton

The Parish

The church, built in 1938, is a prominent part of a suburban landscape on the eastern side of the town of Northampton.





Market Square

Northampton is the county town of Northamptonshire mid-way between London and Birmingham at the 'cross-roads of England'. There is easy access by train to London, Birmingham and Birmingham International Airport. Milton Keynes lies 15 miles to the south. Northampton is also the main employment, retail and cultural centre for Northamptonshire, having two theatres, a cinema, shoe museum, art gallery and library as well as the iconic 78 Derngate, designed by Charles Rennie Macintosh. In 1965

Northampton was designated as a New Town. It has a population of over 249,000 people and is still expanding. It has a history of trade and commerce, and is particularly well known for its shoe manufacturing industry. The town is also home to well known companies such as Carlsberg, Barclaycard and Nationwide Building Society. It has an abundance of parks, and for sports fans there is 'The Cobblers' football team, 'The Saints' rugby team and the Northants County Cricket Club. There is also a college of further education and the University of Northampton. There is an out of town shopping area which also has sports facilities and a cinema.



78 Derngate



Abington Park



Character

The parish has a population of around 12,000. It was built between the 1920s and 1960s and falls into three parts. It is mainly residential with housing which ranges from owner-occupied, through to an area of social deprivation.

The 1950s Eastfield estate, which borders the large open space of Eastfield Park, has a core of older residents, many single parent families and a wide ethnic mix as well as a transient population. It is an area of deprivation, but with a strong Residents Association. As there is no community centre in Eastfield, our two halls and the church are used by the community. There are also a number of sheltered housing projects and a Primary School very near to the church.

Parklands housing estate, which was begun in the 1960s and is mainly owner-occupied, contains Bradlaugh Fields, which is an informal park run by the community, and includes two nature reserves. The estate has a well-used community centre, schools and shops. It is geographically divided from the rest of the parish, by a busy main road. On either side of this road are the Cynthia Spencer Hospice, Rathgar, The Avenue and Squires Mews Residential Care homes. These all form part of the pastoral life of the parish.

Around these two distinct areas is the third part of the parish which includes the church and halls; it is mostly owner-occupied semi-detached houses built in the 1920s and 30s, with a mix of young families and older residents.

Commerce & Industry

Near the church a parade of shops provides a newsagent, groceries, a chiropodist, a hairdressers, a vegetarian restaurant, a take-away and an award winning fish and chip shop. There are many other small shops in the parish as well as a supermarket.

Schools & Education

The parish has four Primary Schools. Eastfield Academy (Nursery and Primary) close to the church, Cedar Road Primary, Parklands (Nursery and Primary.) We have developed strong links with all of these, including taking regular assemblies, visits to church and assisting with the R.E. curriculum. There is also St Gregory's Catholic Primary and Thomas Becket Catholic (Secondary). as well as Northampton School for Girls (Secondary), There is also a Christian nursery, Samuels, based at Broadmead Community Church. Just outside the parish, there is another Secondary Academy and also Northampton College of Further Education.

Health Care

Within the parish there is a large medical practice with a pharmacy next door. There is a General Hospital in Northampton. The Cynthia Spencer Hospice within the parish does not have an Anglican Chaplain but it is hoped that the new incumbent will work closely with the staff to offer ministry to patients and staff when required .

Other Churches in Parish

We have St Gregory's RC, Broadmead Community Church. We work together with Broadmead Community Church to run a Food Bank in St Alban's on Friday mornings.

The Diocese and Deanery

The Diocese of Peterborough covers about 1,200 square miles in Northamptonshire, Peterborough and Rutland. Its population is mainly in towns and Northampton is the largest town in the Diocese and Greater Northampton Deanery the largest Deanery.

Greater Northampton Deanery was formed in 2008 in order to share in God's mission for our area by "seeing Northampton whole". It includes Team Ministries, Local Ecumenical Partnerships, single and multi-parish benefices, 34 centres of worship and a House of Prayer. Over 2,000 adults attend our churches on Sundays and many more at services and other activities during the week. There are two pioneer posts in the Deanery and a number of Fresh Expressions.

There is a clergy Chapter that meets together ten times a year. Northampton has over one hundred churches in the town, including Roman Catholic, Orthodox, Free Churches, Pentecostal, Independent Churches including African and African-Caribbean congregations. Churches Together Northampton has a wide membership and a number of other Christian churches and organizations work together for example in work for the homeless and Street Pastors.

The seven major faiths are represented in the Deanery.

Vision, Mission and Future Direction

We are a vibrant and welcoming Christian community committed to growth through worship, prayer and fellowship whilst responding to the needs of the parish and the wider world.



The puppets help out at the Angels and Shepherds All Age Service

Holy Communion is central to the worshipping life of St Alban's, although we are open to a more relaxed, non-eucharistic style to encourage children and people less familiar with church to feel comfortable in a worshipping environment. The Puppet Crew play a large part in our monthly All Age Worship.

We have one Licensed Lay Minister and a team of people who take communion to the sick in their homes or care homes, and a strong prayer circle. Prayer is the central focus of our small but dedicated Healing and Ministry Teams.

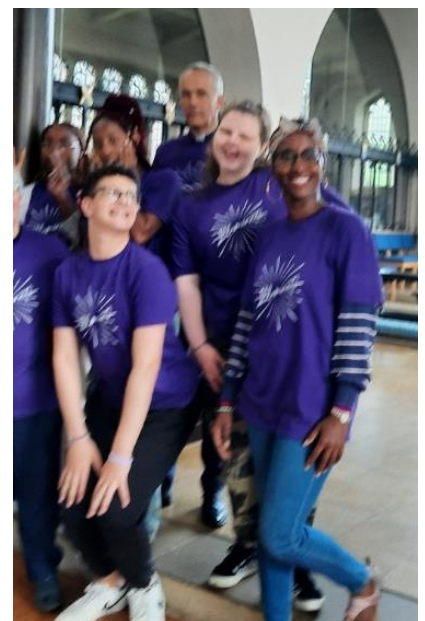
Our aim and intention is to keep this church alive as a place of worship and a focus for the community. It would be wonderful to have someone dedicated to working with the children and young people of the parish and further developing our mission in that area, both on Sundays and during the week.

Our strengths are in our people, friendly and committed, the potential of the parish and the opportunities presented by the many and varied community activities such as Cuppa and Company, Craft Club, Puppet Crew, Friday Drop-in and the Food Bank in our halls and church. We have a small, purpose built refreshment area in church which enables us to be more flexible in the use of the church.

We would also want a new incumbent to further develop our links with other churches in the area, both for worship and to meet the needs of the community.

We have a loyal and hardworking congregation who cheerfully take on the many tasks required in a parish the size of ours. We are keen to work with a new incumbent who we hope will bring new ideas to add to our own. We have already made great inroads with our Primary Schools and would like to develop this further to include the Secondary Schools. Our own young people have twice been on a Youth Pilgrimage to Walsingham which has helped their Christian Faith to develop more strongly.

Some of the opportunities we have to achieve our mission are the young people we get through our doors, contacts made through Baptisms and Weddings, areas of our parish which we have neglected, such as Parklands, and a willingness to make ourselves available to the wider community, including the schools in our parish. We look forward to having a growing congregation to enable us to do more towards furthering God's kingdom.



Church Buildings



The front door decorated for Epiphany

The Church, as well as the Parish Hall to which it is connected by a short cloister, is built of local brick. Above the main doorway of the church is a stone statue of St Alban. It is a light and airy church, built in the Arts and Crafts style. The church is set in its own grounds, bordered by a mature hedge and includes a grassy area with a few small trees and shrubs. There is an unobtrusive mobile phone mast on the tower. Below left is a picture of our carpeted and enclosed Lady Chapel, which is very useful for small services and meetings, having its own source of heat. Also shown is the main altar, chancel and rood screen. The church seats around 200 people.



The nave and font



The Lady Chapel with Easter Lilies

Behind the Parish Hall is the Jubilee Hall There is a small car park at the front. There is a metal security fence around the buildings

We are currently trying to improve an enclosed cloister garden between the church and Parish Hall with a seating area, so that it can be used in the summer months. It is a small haven for wildlife.

The Parish Hall, (capacity 120) which has a large well equipped kitchen and the smaller Jubilee Hall (75), built in the 1980s, are both very well used by the community, there being no other large spaces available nearby. It is fully booked almost every evening and a lot of the daytime too. Examples of groups who use them regularly range from Badminton, Uniformed youth groups, Tea Dances, Residents Committees, Keep Fit, Tai Chi, The Charity Players, Karaoke Choir, Chamber Choir, Ballroom Dance lessons and a Tamil Dance group Then there are one-off bookings for such things as parties, funeral meals, charity dances, and our own monthly Parish Lunch.

The Church is also used for concerts by various community groups and a monthly service by the Marthomite church as well as visits from local schools for RE and for Carol services.



Parish Hall



Jubilee Hall

All our buildings are showing their age. We do try to keep them in good repair, but there is a lot to be done to bring the buildings up to date, grants need to be obtained to meet the demands of the 21st century. The church had a Quinquennial inspection in October 2023. The Compton organ also needs some TLC, totally beyond our budget but we are fortunate that we have a purpose built electronic organ designed especially for our needs.



In the Parish Hall after Confirmation

A' Cuppa and Company' celebration



There's always the all important cake to help the celebrations at St Alban's

The Vicarage



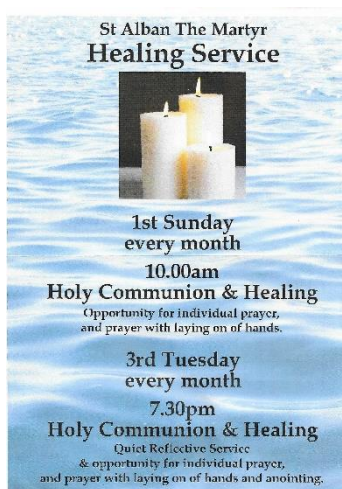
The Vicarage was built and first occupied in 1955. It is next to the church, but not attached. It is brick built, with four bedrooms, large kitchen diner, utility room, lounge, small dining room, and a study/office. It has been modernised and has double glazing, central heating and fully fitted kitchen. It has an enclosed private garden to the left side and rear. It fronts on to Broadmead Avenue, but is set back, with a lawn to the front and metal railings. There is a separate garage and parking to the right side of the house.

Sunday and Weekday Services

The ecclesiastical tradition of the parish is “moderate catholic” with vestments worn on Sundays and Feast Days and altar servers in attendance – M.C. Crucifer, 2 acolytes and Thurifer on Feast days, the role of server is open to all. The Midweek service is less formal although albs and stole are worn. The worship is largely Eucharistic, with good lay involvement .We use Common Worship Times and Seasons and Festivals and Complete Anglican Hymns old and new.

There is 8am Holy Communion(said) every Sunday. Average attendance 6.

Included in our 10am Sunday services are one All-Age Worship (alternately Morning Worship and Holy Communion) per month. Average attendance 65.



On the first Sunday of the month there is Laying on of Hands available in the Lady Chapel.

Every Tuesday evening at 7.30pm there is a Holy Communion(said) Service which includes healing on the 3rd Tuesday of the month.

Average attendance 8.

Other Services

Leading up to Christmas there is Carols by Candlelight, a Crib Service aimed at the younger children and their families, Eucharist of Christmas Night and on Christmas Day, a said Eucharist at 8am followed by an informal (with the Eucharist) Christmas Service.

Leading up to Easter, Lent courses are held, open to all. During Holy Week, Monday, Tuesday and Wednesday evenings we have the Way of the Cross. Maundy Thursday has the Washing of Feet and the Watch to midnight. Good Friday has a Walk of Witness with other churches.



There is also The Last Hour with Veneration of the Cross. Easter Eve has an Easter Fire Service and Easter Day has the 8 and 10am. Harvest is usually celebrated by a 10am All Age service .Remembrance Sunday has a Parade Service. Eastfield Academy holds a Carol Service annually.

We often host services for other organisations such as Brownie Divisional Carol Service and Mother's Union Lady Day service.

Last year there were 3 Child Baptisms, 2 adult, 2 weddings, 6 confirmations and 6 funerals in church (9 others at the crematorium/cemetery). Baptisms and weddings involve home visits and rehearsals in church. This has mainly been done by the incumbent.



Martha the dog had a leading role at the wedding



Photographs after the wedding



A recent Baptism



Outdoor worship during Lockdown

Support Available

The incumbent will receive help with services both in the planning and delivery with lay involvement available to help with Children's Services and Presentations and to lead non Eucharistic services such as Evening Prayer. We have teams of people willing to read, compile and deliver intercessions, serve at the altar and prepare the altars for the differing seasons, both on Sundays and during the week. We also have a small to medium choir and a regular weekly organist who also plays for weddings, funerals etc.

We have a licensed Lay Pastoral Minister who oversees pastoral care and two Lay Readers, one of whom organises a small Healing Team and a St Luke tide Healing service which includes anointing with oil and various stations throughout the church for quiet prayer and/or reflection.



We have a group of people licensed to assist in the administration of the Eucharist in church and to provide it to the sick at home or in care homes.

Our flower team keep the church looking beautiful, raising money for flowers by coffee mornings or through personal donation.

St Alban's church has had Curates in the past and a suitable Priest would be able to offer to the Diocese the possibility of becoming a training incumbent.

We are always keen to support people who are training, both spiritually and financially.

There is a Safeguarding Officer who keeps up to date with issues and legislation concerning this area.

Rotas for Sunday duties, midweek service sheets and a weekly newsletter are produced by volunteers.

Youth and Children's Work

We try very hard to make children and young people feel welcome at St Albans. We have a volunteer Childrens Ministry Co-ordinator. There is a 'rainbow' children's corner for pre-school children within the church. It is carpeted and has toys and activities and a second carpeted corner for older children which needs developing. Living Stones, which is for Primary age children, takes place in the Lady Chapel during the 10am service in term time. There is a shortage of people to help with this vital work. We have a monthly all-age service (Alternately Morning Worship and Holy Communion) at 10am on Sundays which is supported by our inter-generational puppet crew.

There have been First Communion/Confirmation groups specifically aimed at the younger members as and when the need arises.

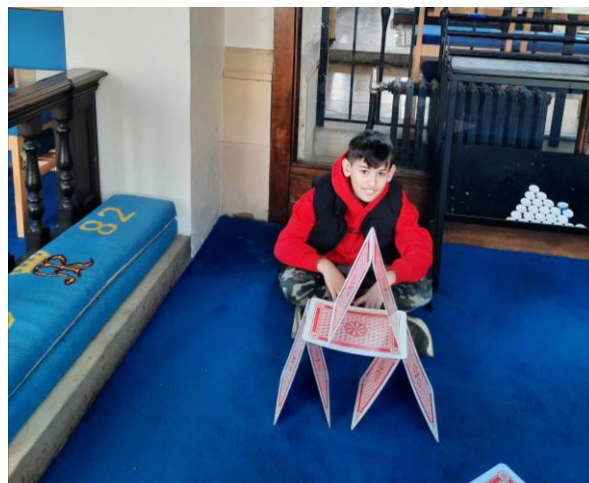
We have a thriving Rainbow group and 2 Brownie Packs who meet in our Halls as well as a recently restarted Beaver Colony and Cub pack. They support our fund raising events and attend Remembrance Day Services. They use the church as a resource, as does the local school. Eastfield Academy holds an annual carol service in the church. The incumbent has taken regular assemblies in local schools, these links we hope will continue.



Walsingham Youth Pilgrimage



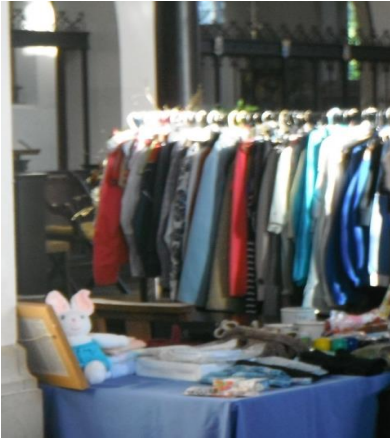
Co-operation in the childrens corner



Living Stones learn about firm foundations

Work with the Community

The Friday Drop-in takes place in church on Friday mornings. The Food Bank, in co-operation with Broadmead Community Church runs for three hours during the Drop-in. We hold a Parish Lunch monthly following the 10am service. The church is also open as a warm space on Wednesday and Friday mornings.



Church Groups and Activities

Courses are held throughout the season of Lent.

There is a Mother's Union Branch, which meets monthly.

Craft Club meets on Thursdays in church.

We have ecumenical links with Broadmead Community and Roman Catholic church. We have a Children's Society Officer and we donate to the Children's Society through collection boxes. We continue to support Christian Aid, we take part in the Annual Historic Churches Ride and Stride.

The Foodbank is well supported by donations, we support the town's homeless with donations of money to the Hope Centre given in lieu of sending Christmas Cards "in house"

Our regular Sunday readings have our weekly bulletin on the reverse and any other relevant or social information.

Our fund raising/ social committee organise many events during the year. Our biggest fund raisers are the Summer Fayre, held at the nearest weekend to our Patronal Festival in June and our Christmas Fayre, generally in November, these both take a lot of effort but are always successful, not just financially but also for a good fellowship and community feel. We run a 120 Club, selling 120 tickets at £2 per month and giving monthly prizes and a half-yearly jackpot, this raises £1,380 per annum. The above income is supplemented by various Coffee Mornings/Strawberry teas and the like.

We have a small but very willing band of volunteer church cleaners and every cleaning session is enjoyed by all and ends with tea and biscuits. In addition 2 paid cleaners who clean the halls.

Home Communion – We have a team who take Communion to the housebound on a regular basis, and also to the residential care homes in our parish.



Finance

Finance Team – Mark Seymour Treasurer
Stewardship Recorder – Barry Searle
Our Parish Share has been paid in full for at least the past 30 years.
Clergy Expenses paid in full.

Reserves @ 31:10.24:

Unrestricted	£ 30,000
Restricted	£15,000
	£ 45,000

The budget is set by the Treasurer and brought to the PCC for approval so that the development plans of the incumbent and PCC can be implemented without financial constraints where possible. We have joined the Parish Giving Scheme. Regular giving is supplemented by fund raising and income from the two halls.



Organisation

The Parochial Church Council meets at least five times a year. Meetings are always well attended, debate can be lively, but everyone's opinion is respected. Most of us have to tick the over 60 and female boxes. There are 4 men on the PCC.. We have a wide range of skills and experience which we try to put to good use.

We have a Standing Committee, Finance Committee,, Safeguarding Officer, Health and Safety co-ordinator Data Protection, a Hall and Church bookings co-ordinator, Electoral Roll Officer and a Fabric Co-ordinator, who all report to the PCC.at each meeting.



Person Specification for St Alban the Martyr

We are looking forward to welcoming a new incumbent who believes they have the vision and enthusiasm to respond prayerfully to the needs of the church and community, and who will lead us in the challenge to continue God's work in our large and diverse parish.

Someone who:

- ❖ will develop the spiritual life of our Church and who will respect its traditions whilst also being ready to explore new avenues of worship.
- ❖ has the skills and enthusiasm to promote youth and children's work as well as continue to develop our ministry to the elderly and vulnerable
- ❖ Will be willing and able to explore and widen our links with the community as well as further develop our local ecumenical connections.
- ❖ is a good listener and communicator.
- ❖ is supportive of lay ministries and is keen to nurture and develop the congregation.
- ❖ has the leadership and management skills to head and inspire a team, whilst recognising and appreciating the talents and skills of others.



A position for you?

If you feel that God is calling you to apply for this vacancy, please contact:

The Ven. Richard Ormston

The Archdeacon of Northampton

Bouverie Court

The Lakes

Northampton

NN4 7YD

archdeacon.northampton@peterborough-diocese.org.uk